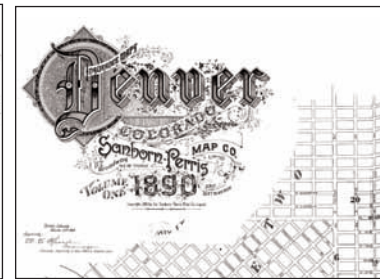


Digital Sanborn Maps, 1867–1970™

Covers Cities and Towns Coast-to-Coast from 1867 to 1970



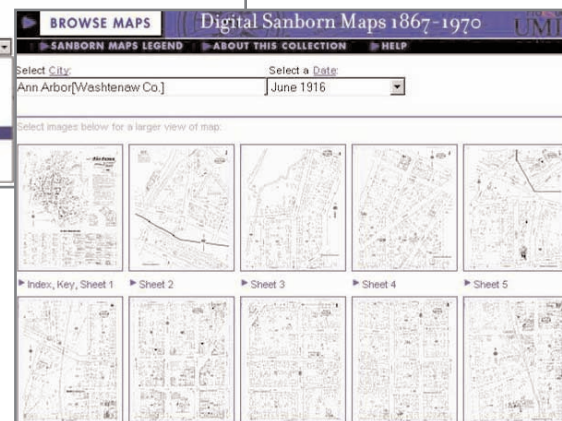
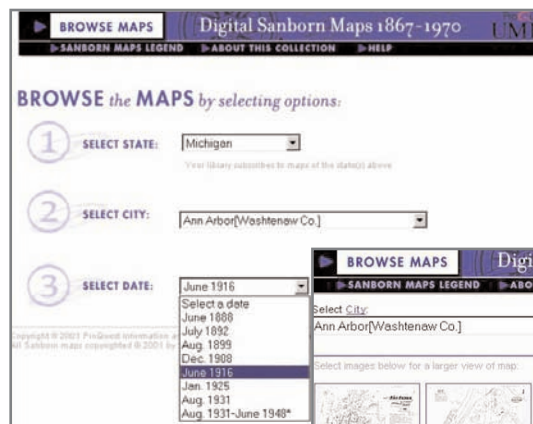
No maps are consulted more in academic and public libraries than Sanborn® fire insurance maps—the detailed property and land-use records that depict the grid of everyday life in more than 12,000 U.S. towns and cities. Today they are as close as your computer, with **Digital Sanborn Maps™**.



A Detailed History of Property and Land Use in America



Founded in 1867 by D.A. Sanborn, the Sanborn Map Company was the primary American publisher of fire maps for over 100 years, repeatedly mapping towns and cities as they changed. The Sanborn Maps were originally compiled to help insurers assess the value of property, identify risk factors, and underwrite losses. But this vital American resource is just as essential to researchers today, and available online from ProQuest with enhanced images.



"Navigating the database is quite easy... its electronic interface allows for much easier access to maps of specific location ... Summing Up: Recommended..."

– J.A. Coombs, Missouri State University, CHOICE, July 2007



A Living Snapshot of History

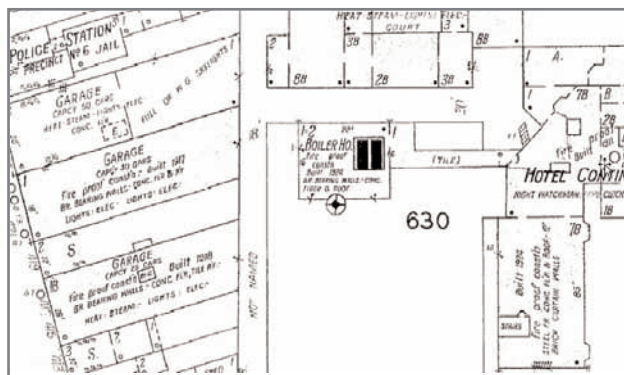


Recording a century of change, Digital Sanborn Maps are valuable historical tools for urban and social historians, architects, city planners, genealogists, local historians, and anyone else who needs to know more about the history, growth, and development of American cities, towns, and neighborhoods by pinpointing the streets, landmarks, and other places noted in the map's index.



Digital Sanborn Maps have many uses:

- Genealogists and local historians can pinpoint buildings and neighborhoods
- Architectural historians can study construction materials and methods
- Urban planners can draw on the past to design for the future
- Historians and geographers can trace the relative development of urban areas within or across regions
- Demographers can chart population shifts
- Transportation researchers can study road, rail, and water connections



"Because cities were mapped several times, the maps enable researchers to trace the architectural history of individual buildings or entire communities. Social historians have used them for analyzing everything from the commuting patterns of 19th century domestic workers to the evolution of major and minor league baseball parks. They are also extremely valuable for studying the impact on the environment of past uses of buildings on or adjacent to a specific location. THE MOST DETAILED GRAPHIC RECORD OF THE GROWTH OF URBAN AMERICA."

– Library of Congress

Over 660,000 maps are included in the Digital Sanborn Maps collection, and they can be manipulated, expanded, printed, and downloaded.

The maps provide a wealth of information, such as building outline, size and shape, construction materials, height, building use, windows and doors, street and sidewalk widths, boundaries, house numbers, and more. Also depicted are pipelines, railroads, wells, water mains, dumps, and heavy machinery.

Combined with other reference sources, such as city directories, photographs, small-scale maps, census records, genealogies, and statistical data, Digital Sanborn Maps provide an unparalleled picture of life in American towns and cities—especially with:

- **ProQuest® Sanborn Maps Geo Edition (1867-1970)** provides digital access to thousands of large-scale maps of select American cities and states, searchable by address and GPS coordinates.
- **Historic Map Works™ Library Edition** pairs nicely with Digital Sanborn Maps to create an entire sense of place—from personal and residential, to business and commercial.
- **Ancestry® Library Edition**, powered by Ancestry.com, delivers billions of records in census data, vital records, directories, photos, and more.
- **HeritageQuest Online™** is a comprehensive, Web-based treasury of American genealogical sources—rich in primary sources, local and family histories, and finding aids.
- **ProQuest Historical Newspapers™** offers full-text and full-image articles for significant newspapers dating back to the 18th century.

OPTIONS FOR EVERY LIBRARY

Digital Sanborn Maps is also available in custom packages. Select individual states, or the entire U.S. collection, and choose from permanent access or a subscription, based on your usage needs.

To learn more or to sign up for a free trial of Digital Sanborn Maps, call your sales representative at 800-521-0600, ext. 3344, email pqsales@proquest.com, or visit our website at www.proquest.com.